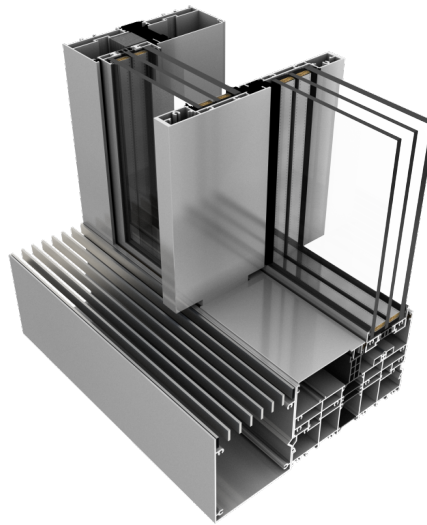


DA-Skyline sliding patio doors



Specifications

Thermal efficiency	
U _w *: Coefficient value for reference design	od 0,85 W/(m ² K)*
*:	for doors with sash dimensions of 2070 x 3444 mm, with a triple-glazed filling with a U _g coefficient of 0.5 W/(m ² K) and a warm edge spacer
Profile	
Profile name:	DA- Skyline
Installation depth:	Sash: 71 mm Frame: 190 mm (2-rail) and 292 mm (3-rail)
Number of chambers:	3
Thermal break:	yes
Number of seals:	2
Glass	
Glazing package:	6ESGx16x6ESGx16x6ESG
U _g value:	0,5 W/m ² K
Package thickness:	52 to 60 mm
Sound insulation of available glazing:	31 to 47dB
Technical parameters	
Water tightness:	up to class 9A (600Pa), EN 12208

Air permeability:	class 3, EN 12207
Wind load resistance:	up to class C5 (2000Pa), EN 12210

Photos

